

Parys mountain trip 3rd April 2025

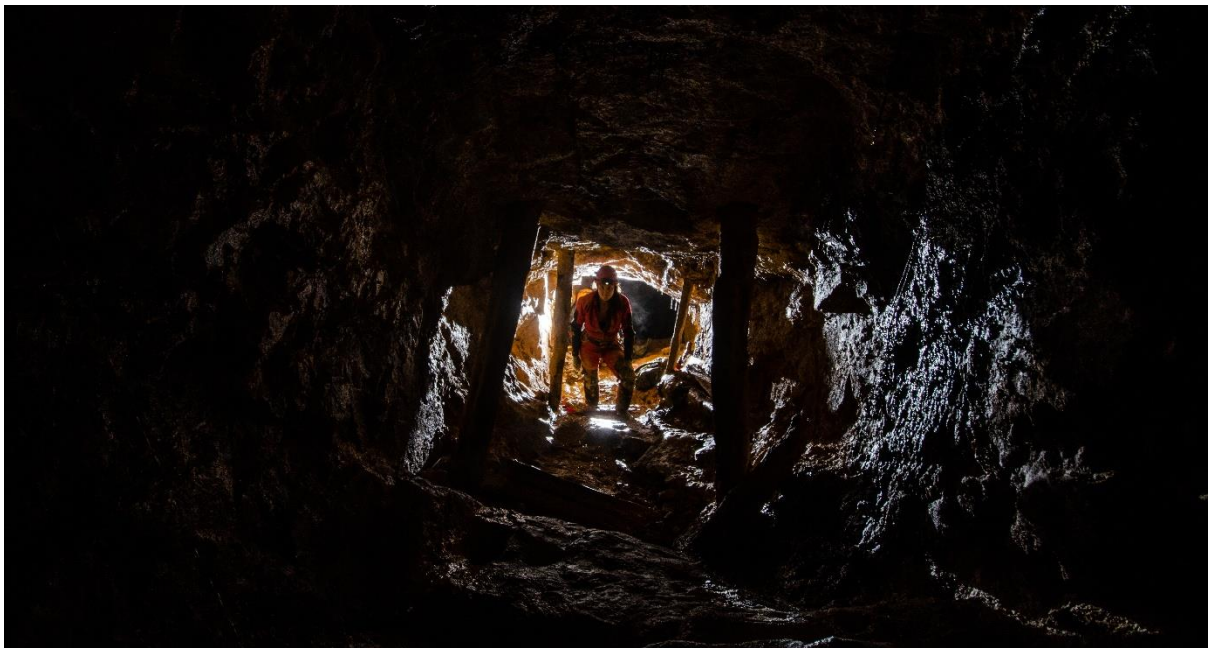
Allan Berry, Eddie and myself decided to do a trip to practise route finding in Parys Mountain, ahead of my planned DCC trip on the 10th May. I took with me a laminated survey, and Allan took his camera kit and flashes. We thought it would be amusing to see how the kit stood up to the acidic conditions. The first obstacle as always, are the locks. As a key holder I thought I had better ensure I could open the lock and avoid being locked to the door with my hand jammed on the other side. After wrestling with the barrier to the car park the rest was much easier. We chose a glorious day, the sun was beating down, so I was keen to escape the heat and the crowds and head underground.



The survey I had was ok, except I had managed to miss off the key to the different levels, so this added an extra element of challenge, guessing if we were on the red, green, orange or yellow level. The mine was as warm as I remembered, with just some acidic drips and welly deep water. I got a welly breach once on the way around. We completed a good circular route and then headed down to explore the next level. My main aim was to navigate to the connection to Mona Mine as we wanted to be confident on finding the way out for the through trip. Allan succeeded in taking some excellent photos and Eddie and myself dutifully posed as his models.



The blue crystal chamber was as stunning as usual. We spent a good 4 hours exploring and taking photographs, before emerging into the heat. As we were a small group, we had the luxury of getting changed in the entrance hut. The survey survived although it had turned brown. We achieved the aim of finding the connection and will now be able to find our way out next time we enter via Mona.



Helen Perkins trip leader